



TCS019

Functional glare free luminaires for surface mounting in ceilings suitable for TLD / TL fluorescent lamps.

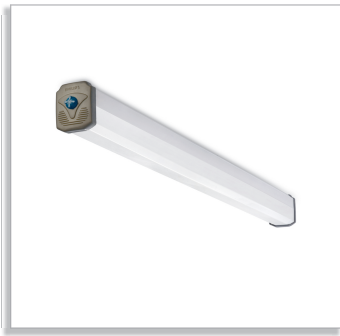
Features

- Housing made of CRCA sheet steel, powder coated gray accommodating all electrical accessories pre-wired up to a terminal block.
- Cover made of opal acrylic.
- Designed for surface mounting on ceilings.

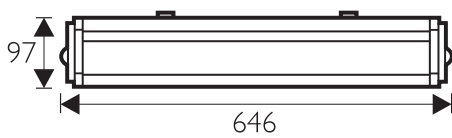
Application

- Small offices
- Reception and public service areas
- Recreational areas (restaurants, cafeterias)
- Shops

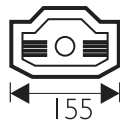
Related products



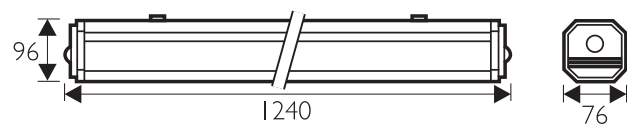
Dimensional drawing



TCS019



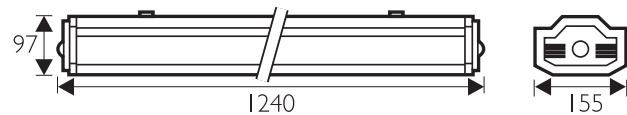
155



TCS019



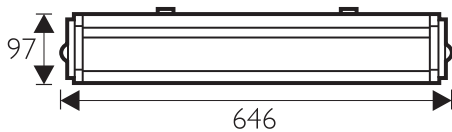
76



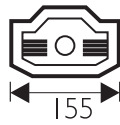
TCS019



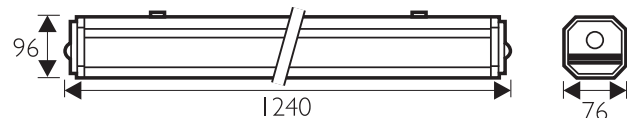
155



TCS019



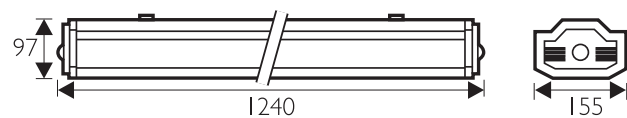
155



TCS019



76



TCS019



155

General information

Order code	Product family code	Number of lamps	Optics	Lamp family code	Lamp power	Gear	Compensation circuit	Optical cover
919015043243	TCS019	2	-	TL-D	18	-	IC	O
919015043248	TCS019	2	No	TL	40	-	I	O
919015043252	TCS019	2	-	TL-D	36	-	IC	O
919015043261	TCS019	2	-	TL-D	36	EBS	-	ACC
919015043266	TCS019	1	-	TL-D	36	HFB	-	-
919015043275	TCS019	2	-	TL-D	36	EBE	-	-
919015043284	TCS019	1	-	TL-D	36	-	I	O
919015043289	TCS019	1	-	TL-D	36	EBS	-	-
919015043293	TCS019	2	-	TL-D	36	EBS	-	-
919015043912	TCS019	2	-	TL-D	18	EBS	-	-
919015044229	TCS019	1	No	TL-D	36	HF	No	No
919015044233	TCS019	2	No	TL-D	36	HF	No	No

Order code	Product family code	Number of lamps	Optics	Lamp family code	Lamp power	Gear	Compensation circuit	Optical cover
919015044676	TCS019	1	No	TL-D	36	EBS	No	No
919015044686	TCS019	1	-	TL-D	36	HFB	-	ACC
919015044776	TCS019	1	No	TL-D	36	HFP	No	No
919015071129	TCS019	1	-	TL-D	36	-	IC	O
919015072128	TCS019	1	-	TL-D	36	EBE	-	-
919015079121	TCS019	1	-	TL-D	36	-	I	O
919015810212	TCS019	1	-	TL-D	36	EBT	-	-



© 2011 Koninklijke Philips Electronics N.V.
All rights reserved.

Specifications are subject to change without notice. Trademarks are the property of Koninklijke Philips Electronics N.V. or their respective owners.

www.philips.com/lighting

2011, December 20
data subject to change